

Stainless Steel Wire Mesh

Sunshine [Stainless Steel Wire Mesh](#) products are generally made of stainless steel of Type 304, Type 304L, Type 316 and Type 316L.

Weave Methods:

The weaving method of Sunshine **Stainless Steel Wire Mesh** is plain weaving, dutch weaving and twill weaving.

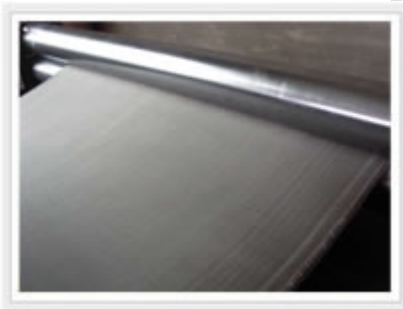
Characteristics:

Sunshine **Stainless Steel Wire Mesh** enjoys many excellent characteristics, such as acid-resistance, alkali -resistance, hot-resistance, heat-resistance, and wear-resistance. Meantime this kind of product has a good outlook and long service life.

Applications:

Just because of these characteristics, the stainless steel wire mesh is extensively used as slurry mesh in petroleum industry, sieve and filtration mesh in chemical industry, acid-cleaning mesh in electric industry,

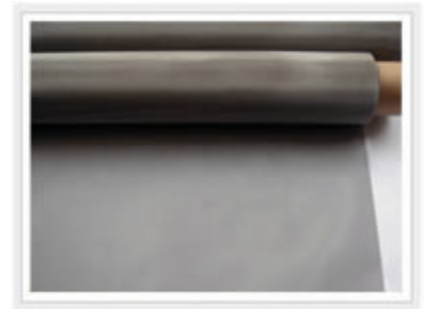
Meantime this kind of product is widely used in the industries of mining, petroleum, chemical, foods, medical and mechanical manufacture.



Stainless Steel Wire Mesh



Stainless Steel Wire Mesh



Stainless Steel Wire Mesh

Main Contact Info:

Add: No.68 Yuhua South Road Anping County Hebei Province China. P.C.:053600

Tel & Fax:

Tel: 86-318-7532188 7512838 7523138

Fax: 86-318-7524828

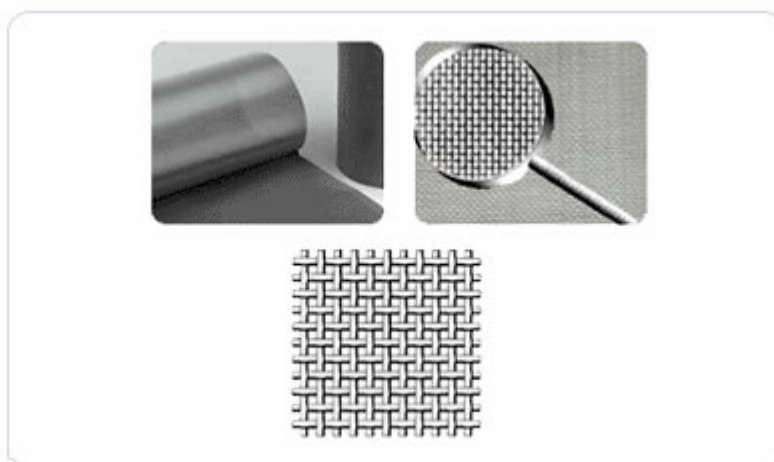
E-mail: sunlight@wire-cloth.org
<http://www.sunny-wiremesh.com>

Weaving Types:

1. Plain Weave

This type is most commonly used. East warp wire passes alternately over and under weft wires at right angles, and vice versa.

Openings are square and wire sizes are the same in warp and



weft.

Stainless Steel Woven Wire Mesh, Plain Weave

Stainless steel wire mesh						
mesh/inch	wire diameter mm	aperture mm		mesh/inch	wire diameter mm	Aperture mm
2mesh	1.80	10.90	-	60mesh	0.15	0.273
3mesh	1.60	6.866		70mesh	0.14	0.223
4mesh	1.20	5.15		80mesh	0.12	0.198
5mesh	0.91	4.17		90mesh	0.11	0.172
6mesh	0.80	3.433		100mesh	0.10	0.154
8mesh	0.60	2.575		120mesh	0.08	0.132
10mesh	0.55	1.990		140mesh	0.07	0.111
12mesh	0.50	1.616		150mesh	0.065	0.104

Main Contact Info:

Add: No.68 Yuhua South Road Anping County Hebei Province China. P.C.:053600

Tel & Fax:

Tel: 86-318-7532188 7512838 7523138
Fax: 86-318-7524828

E-mail: sunlight@wire-cloth.org
<http://www.sunny-wiremesh.com>

14mesh	0.45	1.362	160mesh	0.065	0.094
16mesh	0.40	1.188	180mesh	0.053	0.088
18mesh	0.35	1.060	200mesh	0.053	0.074
20mesh	0.30	0.970	250mesh	0.04	0.061
26mesh	0.28	0.696	300mesh	0.035	0.049
30mesh	0.25	0.596	325mesh	0.03	0.048
40mesh	0.21	0.425	350mesh	0.03	0.042
50mesh	0.19	0.318	400mesh	0.25	0.0385
Electric Welding Net: 0.6m-1.5m					

Dutch Weave:

This type is a filter cloth construction made in the same way as plain weave, except that the weft wires are "driven up" to give a tighter woven cloth with minute openings.



Dutch Plain Weave



Dutch Twill Weave

Stainless Steel Wire Cloth, Dutch Weave

gauge	wire quantity (C/254mm)		wire diameter(mm)		weaving method	weights (kg/m ²)
	warp wire	weft wire	warp wire	weft wire		

Main Contact Info:

Add: No.68 Yuhua South Road Anping County Hebei Province China. P.C.:053600

Tel & Fax:

Tel: 86-318-7532188 7512838 7523138

Fax: 86-318-7524828

E-mail: sunlight@wire-cloth.org
<http://www.sunny-wiremesh.com>



Anping Sunshine Metal Product Factory

p28	7.1	40	0.710	0.630	plain	5.26
p33	8.4	75	0.500	0.355		2.99
p40	10.2	75				3.11
p45	11.4	75				3.19
p50	12.7	75	0.450	3.11		
p55	14	75		3.18		
p60	15.2	100	0.400	0.280		2.57
p74	18.8	110	0.355	0.250		2.34
p80	20.3	110				2.39
p90	22.9	120	0.315	0.224		2.14
p100	25.4	140	0.280	0.200		1.90
p110	27.9	150		1.82		
p120	30.5	150		0.250		0.180
p140	35.6	200	0.244	0.140		1.43
p160	40.6	220	0.180	0.125		1.21
p180	45.7	250	0.160	0.112		1.08
p200	50.8	280	0.140	0.100		0.95
p220	55.9	280				0.97
p240	61	300		0.090		0.93
p260	66	300	0.89			

Main Contact Info:

Add: No.68 Yuhua South Road Anping County Hebei Province China. P.C.:053600

Tel & Fax:

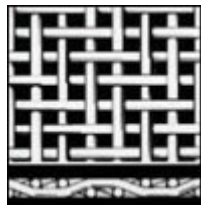
Tel: 86-318-7532188 7512838 7523138

Fax: 86-318-7524828

E-mail: sunlight@wire-cloth.org
<http://www.sunny-wiremesh.com>

p280	71.1	350	0.112	0.080		0.78
------	------	-----	-------	-------	--	------

Twill Weave:



This type is similar to plain, except that weft wire passes alternatively over and under two warp wires (instead of one) in a staggered fashion. Very fine meshes can be woven more readily in twilled weave than in plain.

Stainless Steel Wire Cloth, Twill Weave

gauge	wire quantity C/254mm		wire diameter(mm)		weaving method	weights (kg/m ²)
	warp wire	weft wire	warp wire	weft wire		
X320	81.3	780	0.100	0.071	twill	1.17
X360	91.4	780		0.071		1.21
X400 I	101.6	900		0.063		1.13
x400 II	101.6	780		0.071		1.24
X500	127	1100	0.071	0.050		0.85
X520	132	1100				0.86
X630 I	160	1500	0.063	0.036		0.67
x630 II	160	1400		0.040		0.72
X685	174	1400		0.78		

Main Contact Info:

Add: No.68 Yuhua South Road Anping County Hebei Province China. P.C.:053600

Tel & Fax:

Tel: 86-318-7532188 7512838 7523138

Fax: 86-318-7524828

E-mail: sunlight@wire-cloth.org

<http://www.sunny-wiremesh.com>



Anping Sunshine Metal Product Factory

X795	202	1800	0.050	0.032	0.57
X850	216	1900	0.045	0.030	0.52
X1000	254	2000	0.040	0.028	0.50
X1125	285.8	2300	0.036	0.025	0.47
X1250	317.5	2300			0.44

Note: Approximate cloth weight per square meter is calculated in accordance with stainless steel wire cloth.

Main Contact Info:

Add: No.68 Yuhua South Road Anping County Hebei Province China. P.C.:053600

Tel & Fax:

Tel: 86-318-7532188 7512838 7523138

Fax: 86-318-7524828

E-mail: sunlight@wire-cloth.org
<http://www.sunny-wiremesh.com>